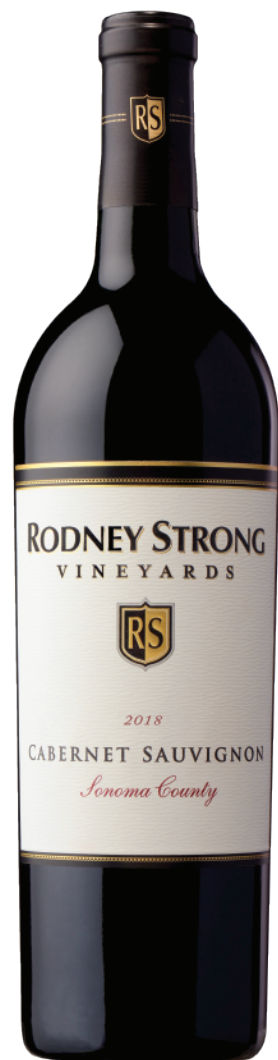


SONOMA COUNTY CABERNET SAUVIGNON 2018



OUR STORY

Since 1959, our passion has been to craft best in class wines in our sustainable winery to share with friends and family. Our family-owned winery is committed to quality wines and to protecting our resources for the future. We are solar powered, certified sustainable, practice Fish Friendly Farming and we were the first winery in Sonoma County to offset our carbon footprint. With an eye on the future, innovation in the cellar and the vineyards is at the heart of all that we do.

HISTORY

Rodney Strong recognized in the late 1960s that Sonoma County's Alexander Valley was an exceptional area for heat loving Cabernet Sauvignon. He planted our first Cabernet vineyard in 1971, Alexander's Crown, on a small hill in Jintown, and the reputation for fine Sonoma County Cabernet has never looked back. Today we have three exceptional Cabernet vineyards, from Jintown to Geyserville, and all the way north to Cloverdale, planted in the well-drained alluvial, volcanic, and uplifted shale/sandstone soils that make Sonoma County an ideal place for this noble grape.

THE VINTAGE & VINEYARD

The 2018 growing season was dry through the spring with well below normal precipitation. Cooler weather dominated this vintage with only two short, relatively mild heat spikes through the entire growing season. Summer days were very pleasant in Sonoma County with highs in the 70s and 80s and with August having even warmer temperatures. With everything in balance, we harvested September 13 through October 30.

TASTING NOTES

Our 2018 Sonoma County Cabernet Sauvignon is rich with dark cherry, plum and baking spices. The delicious fruit is accompanied by black pepper notes, crushed violet and cassis. The palate has medium tannins, lingering spicy oak flavors with a velvety lush finish. Enjoy this Cabernet Sauvignon now with a grilled steak, rack of lamb or grilled winter vegetables.



RODNEY STRONG
VINEYARDS

WINEMAKERS Justin Seidenfeld

ALCOHOL 14.5%

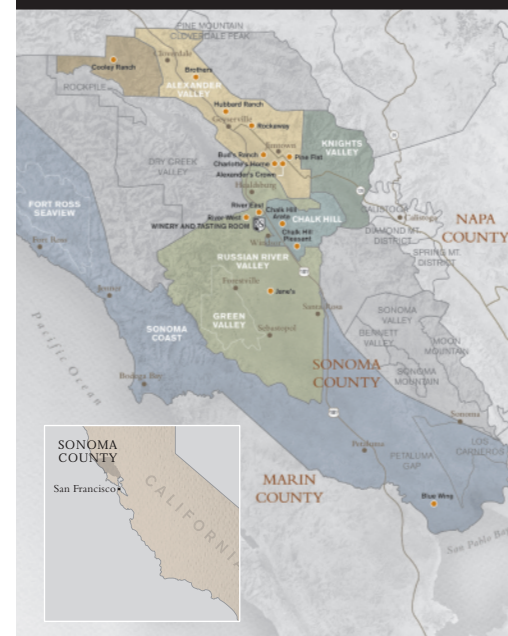
TA 0.58g/100mL

PH 3.69

APPELLATION Sonoma County

VARIETAL 78% Cabernet Sauvignon, 11% Merlot,
4% Zinfandel, 3% Cabernet Franc, 3% Malbec,
1% Petite Sirah

CELLAR & FERMENTATION 16 months in French
& American oak barrels, 20% new



WWW.RODNEYSTRONG.COM

FAMILY OWNED • HEALDSBURG, CA