

© 2018 Rodney Strong Vineyards, Healdsburg, CA



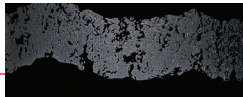
**RODNEY STRONG**  
VINEYARDS

**90**  
POINTS



### 2014 RESERVE CABERNET SAUVIGNON

The 2014 Cabernet Sauvignon Reserve is medium to deep garnet-purple in color and scented of crushed blackberries, wild blueberries and warm plums with touches of underbrush, bay leaves and tobacco leaf. Medium to full-bodied with an approachable frame of fine-grained tannins and lovely freshness, the palate reveals plenty of crunchy black fruits, finishing with great purity.



FAMILY OWNED · SONOMA GROWN

© 2018 Rodney Strong Vineyards, Healdsburg, CA



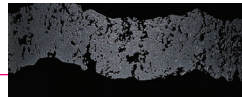
**RODNEY STRONG**  
VINEYARDS

**90**  
POINTS



### 2014 RESERVE CABERNET SAUVIGNON

The 2014 Cabernet Sauvignon Reserve is medium to deep garnet-purple in color and scented of crushed blackberries, wild blueberries and warm plums with touches of underbrush, bay leaves and tobacco leaf. Medium to full-bodied with an approachable frame of fine-grained tannins and lovely freshness, the palate reveals plenty of crunchy black fruits, finishing with great purity.



FAMILY OWNED · SONOMA GROWN

© 2018 Rodney Strong Vineyards, Healdsburg, CA



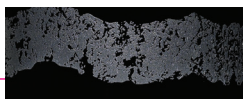
**RODNEY STRONG**  
VINEYARDS

**90**  
POINTS



### 2014 RESERVE CABERNET SAUVIGNON

The 2014 Cabernet Sauvignon Reserve is medium to deep garnet-purple in color and scented of crushed blackberries, wild blueberries and warm plums with touches of underbrush, bay leaves and tobacco leaf. Medium to full-bodied with an approachable frame of fine-grained tannins and lovely freshness, the palate reveals plenty of crunchy black fruits, finishing with great purity.



FAMILY OWNED · SONOMA GROWN

© 2018 Rodney Strong Vineyards, Healdsburg, CA



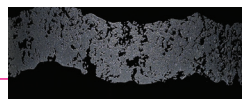
**RODNEY STRONG**  
VINEYARDS

**90**  
POINTS



### 2014 RESERVE CABERNET SAUVIGNON

The 2014 Cabernet Sauvignon Reserve is medium to deep garnet-purple in color and scented of crushed blackberries, wild blueberries and warm plums with touches of underbrush, bay leaves and tobacco leaf. Medium to full-bodied with an approachable frame of fine-grained tannins and lovely freshness, the palate reveals plenty of crunchy black fruits, finishing with great purity.



FAMILY OWNED · SONOMA GROWN